

# Level: Early Advanced

## Technique Requirements (see appendix)

**Keys:** EM/c#m, AbM/fm

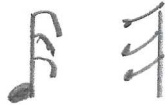
**Scales:** Hands together, up and down, 3 octaves for major and harmonic minor.

**Arpeggios:** Hands together, up and down, 3 octaves

**Dominant 7<sup>th</sup> Chord and Inversions:** Hands together, up and down, V7 - V6/5 - V4/3 - V2 in major and harmonic minor.

## Theory Requirements

### 1. Notes and Rest Values:



### 2. Time Signatures:

Irregular times signatures:    5            7            2+2+2  
   4,            8,            8

### 3. Key Signatures:

**Major:** C, G, D, A, E, F, Bb, Eb, and Ab

**Minor:** a, e, b, f#, c#, d, g, c, and f

### 4. Scales:

Major, natural minor, harmonic minor and melodic minor in the above mentioned keys.

### 5. Intervals:

All intervals of prime through octave: major, minor, perfect, augmented, diminished in above mentioned keys. (Include diminished and augmented 2<sup>nd</sup>, 3<sup>rd</sup>, 6<sup>th</sup> and 7<sup>th</sup>.)

### 6. Chords:

Quality of triads: major, minor, augmented and diminished. Identify and write.

All root position and inversions of triads of the major and minor scale (harmonic) using figured bass. Identify and write. | 1 6/3, 1 6/4. (1 6 may be used for 1<sup>st</sup> inversion)